

TERMS AND CONDITIONS

We put at your disposal the terms and conditions of our services, so that you know the scope of the responsibilities that correspond to MATI TALENT INSTITUTE PRIVATE SCHOOL LLC and families. We ask that you read them carefully. By using this website and placing an order through it, you are accepting these Conditions.

TERMS AND CONDITIONS OF PLUS, INTERACTIVE AND PERSONALIZED ENROLLMENT FOR KINDER, ELEMENTARY AND MIDDLE SCHOOL WITH U.S. STUDENT ACCREDITATION.

This document establishes the Conditions by which the purchase of the enrollment is governed.

MATI TALENT INSTITUTE PRIVATE SCHOOL is a Registered Private School in the Division of Corporations and the Department of Education in the State of Florida, and complies with the following State Statutes of Private Schools 1002.42 (2) (b), 1012.32, 1002.01,1003.23 (2),1003.22 (1) (2), 1003.01 (13), 1003.21 (1).

Florida School Code Department of Education FLDOE: # 5743

Corporation Division: L19000127921

Our office is located in Broward County, in the US State of Florida.

Our address is:

MATI TALENT INSTITUTE PRIVATE SCHOOL

221 West Hallandale Beach Blvd. # 312 Hallandale Beach, FL 33009

1.- About the inscriptions:

a) About the tuition payment: For the payment of the tuition, we offer the following options:



-Deposit to a Bank Account in Mexico (BANAMEX, request data from the shopping cart).

-Deposit to Bank Account in the US (BANK OF AMERICA, request data from the shopping cart).

-Paypal. You need a Paypal account.

-Directly with Credit and Debit Card from anywhere in the world.

-Monthly payments with no interests through your PAYPAL account to www.paypal.me/matihomeschool

b) About the documentation

Once the tuition payment is made, it will be the family's responsibility to fill out and attach all the following requested documentation:

– Proof of enrollment or registration. (It is sent when confirming the payment)

– Signed and scanned printed copy of the Privacy Notice and the Terms and Conditions. – Copy of birth certificate.

– Copy of CURP or PASSPORT of the student.

– Photo of the student.

– Social identification of the parent or guardian.

– Copy of the latest proof of studies.

No student will be enrolled until they have submitted their complete documentation.

2.- Conditions of use of the programs and the website:





MATI TALENT INSTITUTE PRIVATE SCHOOL LLC has all the Reserved and Registered Rights of its BOOKS, PLANNING, CHARACTERS, BRANDS, LOGOS AND COMMERCIAL PHRASES. Therefore, any partial or total copy of its content constitutes a crime and the immediate withdrawal without refund.

Once enrolled, the student will receive access to the interactive platform(s) with which the school cycle counseling will immediately start working. Access to the platform(s) is individual and for the exclusive use of the registered family. Access to the virtual platform is for the exclusive use of the family only. Because they are adaptive and personalized programs, each access will appear according to each child's rhythm. If they share access, it is the responsibility of each family that the instruction is not adjusted and in no case MATI will adjust to the change.

Everything that works on platforms is registered and that is why we do not request evidence, but if a family misuses their access, we reserve the right to withdraw said family from the program, without prior notice and without any refund. Session history is owned by MATI to accredit your school year, this information is not shared with the family nor is part of the progress report.

In MATI we offer personalized advice for reports only for our registered families. This information is confidential and sharing your advisor's personal data without prior authorization will be grounds for cancellation of the program without any refund.

Your privacy and personal data are protected according to our privacy notice. In order to provide the best quality and service, the privacy of our personal data and yours is protected.

Communication with the registered family is direct; When you register, you will be provided with a contact email in case you have any doubts, from Monday to Friday from 10:00 a.m. to 6:00 p.m. Mexico City time, on business days for Mexican and U.S. calendar.



Upon acquiring your tuition you have 3 personalized sessions to solve doubts during the school year, unless your advisor agrees with you to schedule additional appointments at no cost; Extra advice will have an additional charge to your tuition.

3.- Partial payments:

MATI does not have direct partial payment plans. To offer our families this facility, we have an agreement with Paypal. You can pay your tuition up to 6 months without interest from www.paypal.me/matihomeschool and your charge will reach your credit card every month.

If a student discharged or a former member of a Group would like to be a part of MATI again, they must additionally pay their new tuition 50 dollars (usd) for re-enrollment; In the case of former Group members, they must present their letter of release and of NO Due.

4.- Refund policies:

All the information they need to assess and decide if they want to acquire our registration is on our website clearly and precisely stated. If there are specific doubts, you can send an email. The time to reply back to your email for personal reports may take no responsibility or obligation from MATI. It is the family's responsibility to review all the information we provide before enrolling in our program, as payments are not refundable.

5.- Sending documentation

For students residing within the Mexican territory, we use DHL service to send documentation. The cost per courier is covered by MATI. For shipments in the U.S. we use postal shipping at no additional cost to the family. For other countries, we can send the



documentation in PDF format or we can quote the shipment by FEDEX according to the city and country of residence. The cost is covered by the family. MATI's responsibility ends with the dispatch of the envelope and gives the family the guide number. It is very important to verify the shipping address.

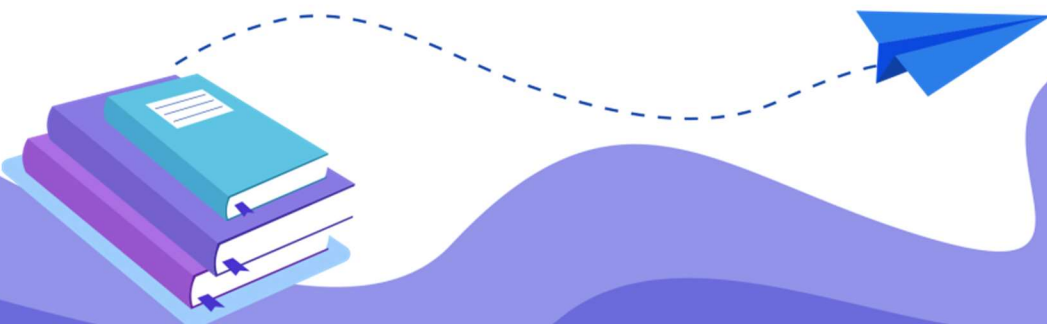
6.- Of use / hours

Families have unlimited time access, however, according to the studies that some universities have done regarding the curriculum, to the same provider and to our experience, we strongly suggest **USING THE CURRICULUM IN SESSIONS FROM 20 TO 30 MINUTES FOR KINDER AND 30 TO 40 MINUTES FOR ELEMENTARY AND MIDDLE SCHOOL FOR 2 TO 3 TIMES PER WEEK, PER PROGRAM.**

The curriculum is not a race to finish, many times children and young people want to move forward just because they love the program and although this is very motivating for parents, it is important to remember that it is an **ACADEMIC INSTRUCTION** not an interactive game, we also understand that we have many talented students and that is why we suggest that, in the case of raising the instructional time to the suggested one, take note of the advice they receive.

Every first day of the month a brief test is enabled in ISTATION, this generates monthly reports so we will have information on its progress and the necessary evidence so that MATI will not ask you for evidence along the school year to accredit these subjects, only for extracurricular classes or additional as knowledge of the environment, History, Geography, in the grades that they may apply.

In MATI we do not ask for evidence of the subjects they take with us, but the support being online does not mean that they cannot take notes of the instruction.



7.- Calendar

In MATI we follow the American calendar from August 1 st until May 31 st , each family has the freedom to manage their times and ways to carry it out. Once enrolled, if you wish to schedule an appointment, it is important to review the calendar and arrange an appointment with your advisor. It is very important that families keep in mind that the access is renewed every school year.

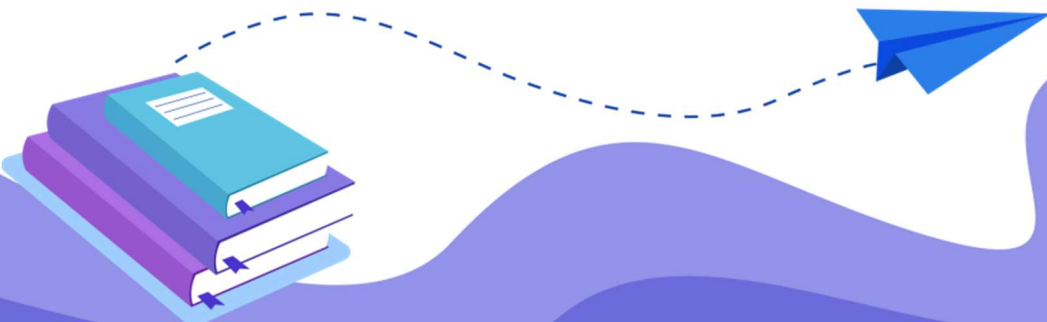
8.-Passport / Visa Procedure

Each family is responsible for researching and processing their Visa and/or Passport if they wish. This procedure is foreign to MATI and we are not responsible for its result. MATI TALENT INSTITUTE PRIVATE SCHOOL grants U.S. Oficial Registration Certificate.

9.-RESPONSIBILITIES

From MATI TALENT INSTITUTE PRIVATE SCHOOL:

- It is the responsibility of MATI to enroll students once they have paid the registration and submitted all the requested documentation.**
- It is the responsibility of MATI to send the access for each program to the family in a period not exceeding 48 hours after receiving all the paperwork requested.**
- It is the responsibility of MATI to oer families the necessary support to take advantage of the curriculum during the school year, through our curriculum approved as a grade promotion, aligned to the standards of each State and the Common Core of the U.S., as well as the Universal Assessment and Diagnostic Evaluation.**





- It is the responsibility of MATI to send families the grades certificate at the end of the school year, if the family has met the requirements in time and form for approval.
- It is the responsibility of MATI to send reports and their interpretation to families. A report will be sent mid-year and one more before concluding the school year (2 in total).

From parents:

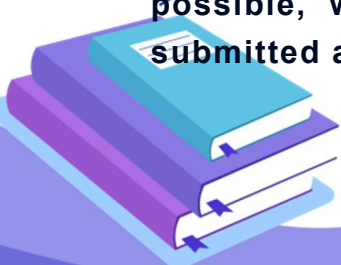
● It is the responsibility of the parents of students enrolled in MATI TALENT INSTITUTE PRIVATE SCHOOL to carefully read, understand and follow the stipulations and indications established in this document, in order to anticipate any eventuality and to be clear about the responsibility for each of the parties.

● It is the parent's responsibility to provide true information by filling out the registration form and submitting the required documentation. Any false information will be subject to the nullity of the registration, without any refund.

● It is the responsibility of the parents to respect the internal guidelines and manage a code of values as a family, communicating with respect and education. Any situation contrary to this will be a cause for withdrawal without the right to reimbursement.

● It is the responsibility of the parents, that their children TAKE NOTES or that they CARRY OUT THE EVIDENCE PORTFOLIO to keep progress of the school year. In MATI we will not ask you for evidence about the subjects they take with us to accredit the cycle but this does not mean that they should not be saved.

● It is the responsibility of the parents to know the legal status of homeschooling in their country and to investigate whether the revalidation of studies carried out in an official U.S. school is possible, what is the procedure, what documentation should be submitted and what to say in revalidation processes.



●It is also the responsibility of the parents to carry out the process of revalidation of studies before the corresponding authorities at the end of sixth grade of elementary school.

10.- Limits of liability:

MATI TALENT INSTITUTE PRIVATE SCHOOL is not a Mexican school, therefore, MATI's responsibility ends with the delivery of the certificate of studies to families, issued by the U.S. institution it represents. MATI is not responsible for the criteria applied in the different states of Mexico and other countries for the revalidation of studies, nor it is responsible for the errors that families could make when carrying out the procedure before the corresponding states.

MATI is not responsible for the progress of a student, because the instructional sessions are carried out by parents or children, our responsibility is to provide them with access.

11.- Requirements for the use of platforms and technological resources:

MATI resumes are 100% online. Therefore, it is the responsibility of each family to consider the following requirements to be able to use them and receive the advice that each program includes:

-Read the installation suggestions:

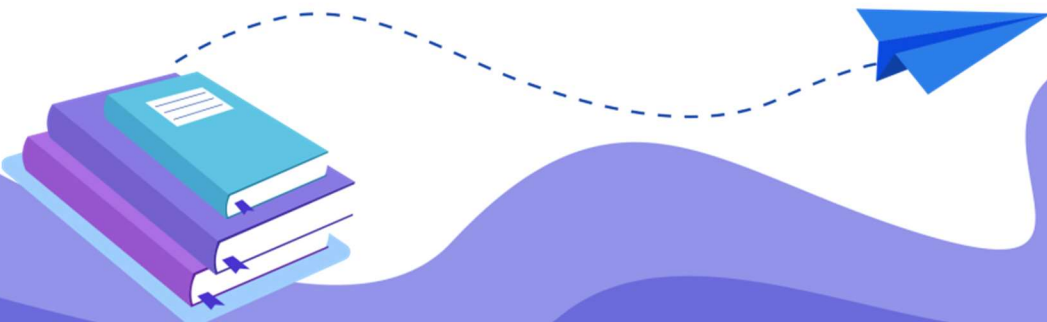
**-Check the technology requirements of Istation
<https://www.istation.com/Support>**

-Have a good Internet connection.

-Remove cookies constantly from your computer.

-Read the installation instructions

<http://www.matihomeschool.com/installation/>



Both programs can be used on Tablet, iPad or PC but NOT on CELL PHONES or small computers. IPAD MINI 4 is a device that we do NOT recommend because of its size for the use of the instruction.

MATI is not responsible for the specific configuration of the computer, browsers and software loaded on it, which obstructs the access and viewing of the platform, videos and online games. In these cases, it does not have technical support to help detect errors or configurations of the equipment.

MATI is not responsible for the progress of a student, as the instruction sessions are held with the parents.

Both programs are widely awarded, we suggest you read about them in these links

MATH WHIZZ

ISTATION

The access licenses we provide at MATI TALENT INSTITUTE PRIVATE SCHOOL are scholar licenses.

APPLICATION OR INTERPRETATION OF CONDITIONS:

For all purposes not provided for in these general conditions, the corresponding legal system considerations will apply.

I understand that this Terms and conditions will be effective for the duration on my child's attendance to Mati Talent Institute Private School.

Signature of Parent/Guardian

